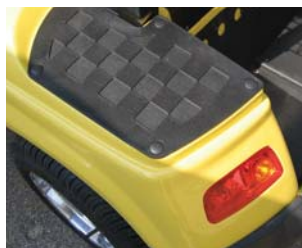




Star Series Electric Vehicles



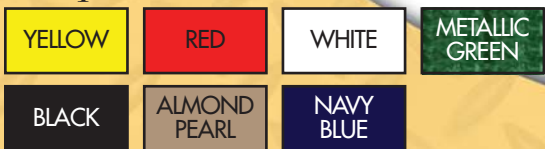
Model: STAR-48-2 or 36-2

- Six 8V (48V) or six 6V (36V) batteries required
- 2 passengers
- 5.5HP DC motor (48V) or 4HP DC motor (36V)
- 400 amp (48V) or 300 amp (36V) Curtis programmable controller with regenerative braking
- Rear view mirrors on both sides
- Retractable seat belts (48V only)
- Functional front and rear bumpers
- Curtis battery indicator
- Horn, reverse beep, parking brake
- Head lights, taillights, brake lights, turn signals
- 48V or 36V to 12V voltage reducer for all accessories
- Foldable tinted windshield
- 10-inch Aluminum wheels
- Plastic battery box
- Aluminum diamond plate or Stainless steel side rails
- Tan or white seats
- Golf bag holder with sweater basket
- Rear scuff guards
- Off-white molded plastic roof with grab handles
- Automatic battery charger included
- 16mph - 23mph maximum speed
- 94" L x 47" W x 72" H
- Two-year limited warranty

Options:

- LSV (NEV) Package
- 10:1 High Speed rear end
- Woodgrain dash, steering wheel, seat back

Body Color:



JH Global Services, Inc.

52 Pelham Davis Circle, Greenville, South Carolina 29615, USA

Phone: 864.297.8833 Fax: 864.297.7010 Email: jhglobal@jhglobalinc.com www.jhglobalinc.com